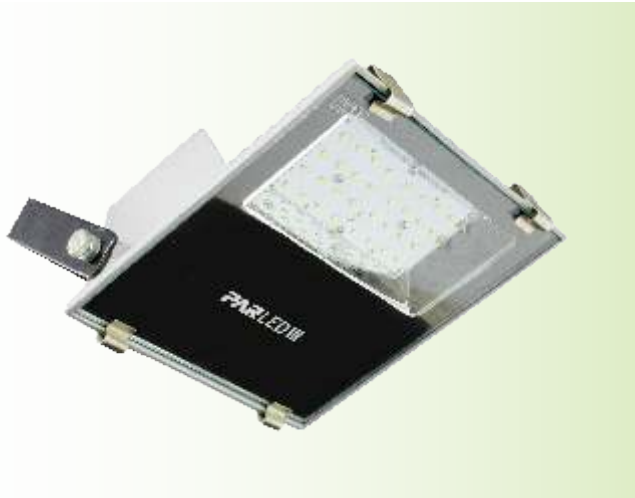


Area Spark is a highly efficient range of floodlights designed for replacement of conventional technology. The Area Spark flood light incorporates LED light source, optical system, heat sink and driver into one compact housing. Its specially designed heat sink incorporates aesthetics and excellent heat dissipation to ensure reliability and long lifetime. Area Spark offers lumen packages for many different application areas as well as its uniform light distribution bringing area lighting into a new era.


**FEATURES & BENEFITS**

- Energy saving upto 55% when compared to conventional floodlights.
- Luminary efficacy reaches 125 lumens/Watt,
- Best Thermal Management by Maintain the "Zero Air Gap" between MCPCB and cast aluminium modules.
- LM-80 compliant high efficiency EMC package & Photo biologically safe LEDs
- High performance electronic driver with 440V protection for 8 Hrs. (Phase to Phase).
- Along with the additional 10kV/5kA built-in surge protection device.
- High quality cool, neutral and warm white light with high colour consistency.
- No harmful UV & IR radiation
- IP65 level of protection against dust penetration & low pressure water jets from any direction.
- Median useful life  $L_{70} B_{50}$  50000 hours

**PRODUCT SPECIFICATIONS**
**Housing & Glass Frame :**

Epoxy powder coated finished Cast aluminium housing (heat sink) for effective thermal management, sturdiness & excellent corrosion resistance. Toughened glass fixed to the housing with SS toggles. Silicon gasket and Cable gland is used for maintaining ingress protection.

**Optics:**

Optional High efficiency polycarbonate modular Lens plate of (30°/60°) for narrow & wide beam angle to ensure better uniformity of symmetrical light distribution.

**Note:** Area Spark Luminaires are provided with additional 10kV Built in surge protection device (SPD).

**Light source :**

High efficiency long life LED module with EMC package SMD type LED mounted on MCPCB. Lumen efficacy of LED  $\geq 150$  lm/W and viewing angle of 120° to ensure better uniformity.

**Electronic Driver :**

Built in potted constant current multistage isolated LED driver with < 10% THD, PF  $\geq 0.98$ , Output Open /Short Circuit protection, Over Voltage protection, 6.5kV Surge Voltage protection & other safety tests as per IS 15885 Part-2/Sec 13 and BIS comply.

**Mounting & Maintenance :**

Wall or surface mounting using adjustable MS cradle of thickness 3.0 mm provided with the fixture by 3 circular slots of 10mm  $\varnothing$  at center distance of 50 mm.

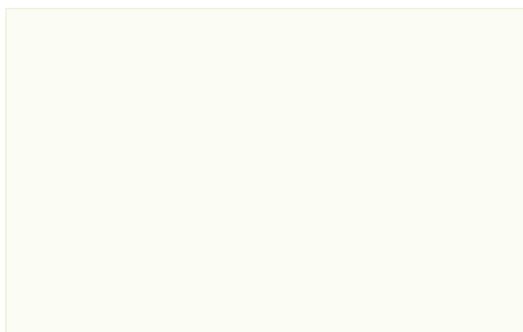
**APPLICATIONS :**

- Landscape features
- Hording & Facades Lighting
- Factories & Warehouse
- Security and amenity lighting
- General Area Lighting

**TECHNICAL DATA**

Product Code	Ordering Code	LED Wattage	System Wattage (W)	Rated Voltage (V)	Mains Current (A)	Lumens
PLFL 513 / 35	PLFL 513 / 32 / 150	30	35	230	0.16	4250
PLFL 513 / 50	PLFL 513 / 48 / 150	44	50	230	0.23	6350
PLFL 513 / 70	PLFL 513 / 64 / 150	61	70	230	0.32	8450
PLFL 513 / 100	PLFL 513 / 96 / 150	87	100	230	0.46	12700

**Note:** Warranty Voids for LED fixtures including Drivers, if individual points of installations are not provided with proper Earthing

**TECHNICAL DRAWING**

**DIMENSION**

Product Code	Dimension in mm			Approx Weight
	L	W	H	
PLFL 513 / 35	270	205	80	1.800
PLFL 513 / 50	270	260	80	2.200
PLFL 513 / 70	370	205	80	2.500
PLFL 513 / 100	370	260	80	3.150