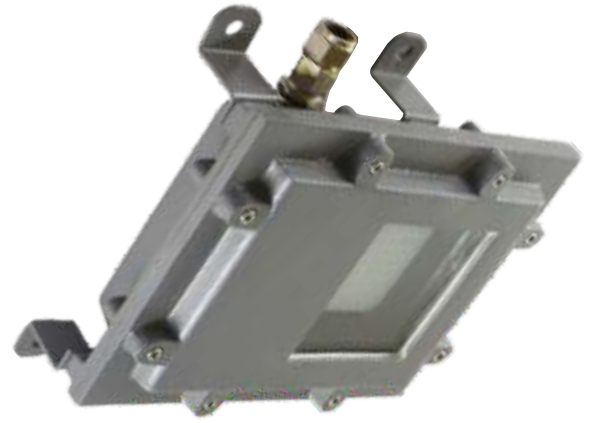


# TECHNICAL SPECIFICATIONS :

## General Information

<b>Generic Name</b>	FLP Bulk Head
<b>Product Code</b>	PLFB 538 / 30 / xx
<b>Product Ordering Code</b>	PLFB 538 / 42 / 100
<b>Light Source</b>	SMD Type High Power LED
<b>Driver</b>	Yes – Constant Current
<b>Surge Protection Device</b>	Yes – 10kV



## Performance

Luminaire Output	Up to 3800 lm
------------------	---------------

Power Absorption	Up to 30Watt
------------------	--------------

## Optoelectronics

Color rendering index (CRI)	>70
Correlated Color Temperature	6500K / 5000K / 2700K
Beam angle of light source	120°

Luminous Efficacy	150 Lumens / Watt
Optic type	N.A
Median useful life L70B50	50,000 Hour(s)

## Operating & Electrical

Voltage Input	130 to 280 VAC
Current Input	< 135mA @ 230 VAC
Power Input	≤ 30Watt

Line Frequency	50 Hz
Power Factor	≥ 0.95
Working Temperature	– 10° C - +50° C.

## Luminair Body

Hosing Material	LM-6 Grade Aluminium Alloy
Hosing Finished	Epoxy Powder Coated - Dark Grey 632 as per IS-5

Optical Cover Material	Heat Resist 8mm Thick Toughened glass
Mounting Bracket	Fixed Bracket , 2 circular slots of 12mm Ø at center distance of 265mm.

## Electronics

Driver	Single Stage Fly back with PF Correction C.C. Driver
Setup rise holdup time for driver	< 0.5 sec

Efficiency of Driver	≥ 87%
THD in %	≤ 10% (Full Load)

## Protection

Surge Protection	6.5 kV - Inbuilt in Driver
Voltage Protection	Phase to Phase protection of 440V. for 8 hrs.
Ingress protection code	IP - 65

Over Heat Protection	Yes (Drop Output Current)
Short Circuit Protection	Yes (Auto recovery)
impact protection code	IK - 05

## Certification under the Brand logo GFEC Model No.: GFEC-CL-01

CIMFR Certificate No.	IN/CIMFR/TR22/P/H385
-----------------------	----------------------

PESO Certificate No.	P-576488/1
----------------------	------------